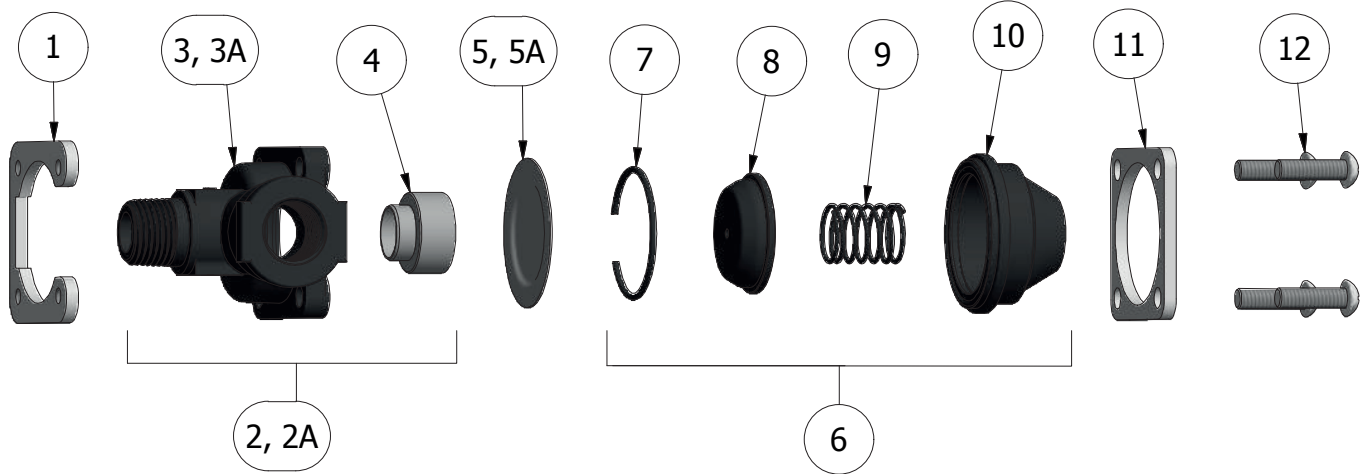


NO. 8400-1/4-PP  
PIPE PLUG  
(SHIPPED WITH UNIT)



| ITEM | PART NO.       | DESCRIPTION   |
|------|----------------|---|
| 1    | CP9017-IZP     | BODY CLAMP PLATE, STEEL, ZINC PLATED (STANDARD)       |
| 2    | 12338-1/2-NYB  | BODY SUB-ASSEMBLY, 1/2" NPT (INCLUDES ITEMS 3 AND 4)  |
| 2A   | 12338-3/4-NYB  | BODY SUB-ASSEMBLY, 3/4" NPT (INCLUDES ITEMS 3A AND 4) |
| 3    | CP8361-1/2-NYB | BODY, 1/2", NYLON (BLACK)                             |
| 3A   | CP8361-3/4-NYB | BODY, 3/4", NYLON (BLACK)                             |
| 4    | CP12333-NY     | INSERT, NYLON (BLACK)                                 |
| * 5  | CP12335-FA     | DIAPHRAGM, FAIRPRENE (STANDARD)                       |
| 5A   | CP12335-VI     | DIAPHRAGM, VITON (OPTIONAL)                           |
| 6    | 12329-CE       | BONNET SUB-ASSEMBLY (INCLUDES ITEMS 7,8,9, AND 10)    |
| * 7  | CP12336-302SS  | SNAP RING, TYPE 302 STAINLESS STEEL                   |
| * 8  | CP12334-2-CEB  | BACK-UP DISC, CELCON (BLACK)                          |
| * 9  | CP12337-302SS  | SPRING, TYPE 302 STAINLESS STEEL                      |
| * 10 | CP12331-2-CEB  | BONNET, CELCON (BLACK)                                |
| 11   | CP12330-IZP    | BONNET RETAINER PLATE, STEEL, ZINC PLATED (STANDARD)  |
| 12   | CP13093-7/8-SS | SCREW, STAINLESS STEEL (4 REQ'D)                      |

AB12328-KIT: SPARE PARTS KIT (INCLUDES ALL ITEMS MARKED WITH \*)

VITON IS A REGISTERED TRADEMARK OF THE CHEMOURS COMPANY

|  |                                      |  |
|--|--------------------------------------|--|
| <b>DESCRIPTION:</b><br>NO. 12328-NYB LARGE CAPACITY<br>DIAPHRAGM CHECK VALVE |                                      |  |
|  | REVISION NO. 4<br>REFERENCE: 7/23/18 | Parts List No.<br><b>PL12328-NYB</b><br>SHEET: 1 OF 1    DWG SIZE: A |